

GAMES FOR ADULTS & TEENS



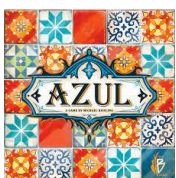
Adventure Begins 😊

Age: 10+ Players: 2-4

Complexity: 1.5 ⌚: 60 mins

A fun, fast entry into the world of D&D. Players choose their characters

and journey as they travel through the lands of Neverwinter. Players work together to overcome fantastic obstacles, battle monsters, and defeat the Boss Monster terrorizing the realm. The role of Dungeon Master passes from player to player with each turn, so everyone gets to be part of the storytelling.



Azul

Age: 8+ Players: 2-4

Complexity: 2 ⌚: 30-45 mins

Players compete as artisans decorating the walls of the royal Palace of Evora.

By carefully drafting the correct quantity and style of tiles, the most clever of artisans plan ahead to maximize the beauty of their work (not to mention their scores!) while ensuring they wasted no supplies in the process.



Betrayal at the House on the Hill 😊

Age: 12+ Players: 3-6

Complexity: 3 ⌚: 60 mins

A tile game that allows players to build their own haunted house room by room, tile by tile, creating a new thrilling game board every time. The game is designed for three to six people, each of whom plays one of six possible characters. Secretly, one of the characters betrays the rest of the party, and the innocent members of the party must defeat the traitor in their midst before it's too late!



Boss Monster

Age: 13+ Players: 2-4

Complexity: 2 ⌚: 30 mins

Inspired by classic video games, Boss Monster challenges you to become a villain, build a dungeon, lure in adventurers... and destroy them!

Players compete to see who can lure and destroy the most adventurers.



Cards Against Humanity

Age: 17+ Players: 4-30

Complexity: 1 ⌚: 30 mins

Cards Against Humanity is a party game for horrible people. The game is simple.

Each round, one player asks a question from a black card, and everyone else answers with their funniest white card.



Dixit

Age: 8+ Players: 3-6

Complexity: 1 ⌚: 30 mins

Every picture tells a story – but what story will your picture tell? Dixit is the

lovingly illustrated game of creative guesswork, where your imagination unlocks the tale. In this award-winning board game, players will use the beautiful imagery on their cards to bluff their opponents and guess which image matches the story. Guessing right is only half the battle – to really succeed, you'll have to get your friends to decide that your card tells the story!



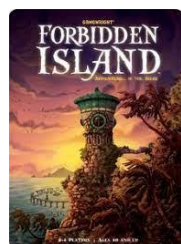
Evolution

Age: 12+ Players: 2-6

Complexity: 2.5 ⌚: 60 mins

Evolution is an award-winning board game where players adapt species in an ever changing ecosystem with

hungry predators and limited resources. Traits like Hard Shell and Horns will protect you from Carnivores, while a Long Neck will get food that others cannot reach.



Forbidden Island 😊

Age: 10+ Players: 2-4

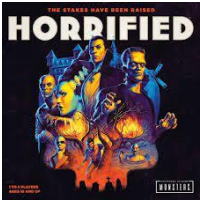
Complexity: 2 ⌚: 30 mins

Join a team of fearless adventurers on a mission to capture four sacred treasures from the ruins of this

perilous paradise. Your team will have to work together and make some pulse-pounding maneuvers, as the island sinks beneath every step! Race to collect the treasures and make a triumphant escape!

😊 Indicates game is cooperative rather than competitive

GAMES FOR ADULTS & TEENS

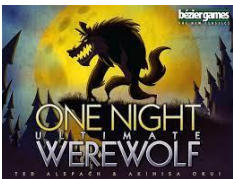


Horrified 😊

Age: 10+ **Players: 1-5**

Complexity: 2 ⌚: 60 mins

Imagine living in a place so wretched that it's not plagued by one, two, or even three monsters, but seven of the most horrifying fiends you've ever heard of. In this game, you'll come face to face with them all as you work together to rid the town of these maniacal or misunderstood creatures... before it's too late.



One Night Ultimate

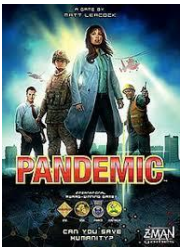
Werewolf

Age: 8+ **Players 3-10**

Complexity: 1.5 ⌚: 10 mins

A fast-paced game for 3-10

players where everyone is dealt a secret role. Many of these roles have special abilities that will aid that player in gaining information. In the course of only one night and the following morning, the players will determine who among them is a werewolf...hopefully.



Pandemic 😊

Age: 8+ **Players 2-4**

Complexity: 2.5 ⌚: 45 mins

Several virulent diseases have broken out simultaneously all over the world!

The players are disease-fighting specialists whose mission is to treat

disease hotspots while researching cures for each of four plagues before they get out of hand.



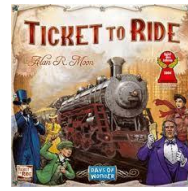
Splendor

Age: 10+ **Players: 2-4**

Complexity: 2 ⌚: 30 Mins

Players are merchants of the Renaissance trying to buy gem mines, means of transportation, shops—all in order to acquire the most prestige

points. If you're wealthy enough, you might even receive a visit from a noble at some point, which of course will further increase your prestige.



Ticket to Ride

Age: 8+ **Players: 2-5**

Complexity: 2 ⌚: 30-60 mins

Ticket to Ride is an award-winning, cross-country train adventure game.

Players collect train cards that enable them to claim railway routes connecting cities throughout North America. The longer the routes, the more points they earn. Additional points come to those who can fulfill their Destination Tickets by connecting two distant cities, and to the player who builds the longest continuous railway.

😊 Indicates game is cooperative rather than competitive